



# STUDIO CITY RESIDENTS ASSOCIATION

*Your Advocate for Studio City*

**June 2012**

## IN THIS ISSUE:

Griffith Park Master Plan ..... Page 2

Broken Sidewalks ..... Page 4

Beautiful Studio City ..... Page 5

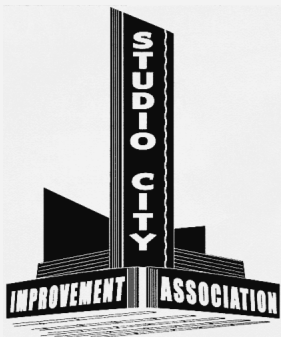
## CITY STARTS TO TACKLE STRAY SHOPPING CARTS

In its first step to keep shopping carts out of neighborhoods, the Los Angeles City Council passed a shopping carts ordinance, requiring new stores with six or more carts, as well as major remodels of existing stores, to include shopping cart locking and containment devices in the design of the premises. This will mean that carts will remain on the premises of the store and not end up as blight, on street corners, in parks or wherever else they might be ditched. The city retrieved 5,340 carts in just six months in a pilot program of picking up all the carts from the streets of Council District 6.

This is just the beginning: there are more than 10,000 existing stores with six or more carts, which represent the heart of the problem. While most stores do address the issue, bad operators are impacting the business environment for everyone else.

Now that the ordinance for new construction and remodels has been passed, the City is expected to continue working on regulating existing stores. Many cities require stores to hire a cart-retrieval service that removes any lost, stolen or abandoned carts within 24 hours. This approach and others will be explored in the months to come as the City Planning Department, City Council offices, neighborhood and community organizations and industry representatives all meet to explore potential solutions.

## HELP THE BID ENERGIZE VENTURA BOULEVARD



The non-profit Business Improvement District (BID) in Studio City, also known as the Studio City Improvement Association, makes a number of contributions to the local community, including maintaining trees and landscaping, improving and repairing curbs and gutters and repaving alleyways, together with other functions. The BID works closely with the Studio City Beautification

Association in these efforts. In addition, the BID works to maintain a friendly and compatible business district.

The BID would like to hear suggestions on how to energize Ventura Boulevard with more foot traffic, events and any other means to create a further sense of neighborhood, including things to do on summer nights or weekends. Please direct suggestions to the BID's Executive Director, Lorena Parker, at (818) 655 5377 or email [Lorena@studiocitybid.com](mailto:Lorena@studiocitybid.com).

## SCRA MAYORAL CANDIDATE SPEAKER SERIES: ERIC GARCETTI



Los Angeles City Councilmember Eric Garcetti addressed the Studio City Residents Association Community Meeting as part of the organization's ongoing mayoral candidates' speakers series.

**LA River Natural Park:** Garcetti said he was committed to development of the Los Angeles River and has agreed to seek funds from other sources to acquire the Weddington Golf & Tennis property, which Save Los Angeles River Open Space (SLAROS) has proposed for the development of Los Angeles River Natural Park.

**Universal Expansion:** Garcetti explained that development on the Metro (west side of Lankershim) is dead at this time and no housing will be built on the NBC Universal lot (east side of Lankershim). NBC Universal has decided to keep this space for studio productions.

(Continued, Page 2)

**(Garcetti, cont'd)**

**City Council Redistricting:** Garcetti did not agree that a totally independent commission is better than the City Council being directly involved with redistricting efforts. If voters do not like the districts, then they can vote the councilmember out of office.

**City Parking Lots:** Garcetti explained that selling city parking lots is a quick fix, but not a long-term solution, in the event of a future budget crisis. He is against the City divesting itself of these assets. In addition, Garcetti offered that parking is essential to vibrant commercial areas and suggested the garages can be made profitable and a source of revenue. Regarding street parking, Garcetti used his smart phone and an app to demonstrate how many parking spots were available along Ventura Blvd. This app helps reduce the number of cars from circling to look for spaces and helps reduce pollution.

**Technology:** If elected, Garcetti would appoint a "Chief Technology Officer" to help the City become more efficient by using the latest technologies. Examples are sensors on fire hydrants to determine when pressure is down (labor savings); sensors that report when street lights are out, etc.

**Farmers Field:** Garcetti supports the project for the purpose of increasing Los Angeles' convention capacity from thirtieth in the nation to around fifth.

**DWP:** Garcetti said any increase in rates needs to be in conjunction with aid in reducing bills through smart use of water and electricity.

## **STATE AWARDS GRANT TO RESTORE NATIVE HABITAT ALONG LOS ANGELES RIVER**

The California Department of Transportation has awarded Community Conservation Solutions (CCS) a \$339,000 grant to restore natural habitat by planting more than 4,000 native trees and shrubs along the Los Angeles River next to the proposed Los Angeles River Natural Park site between Coldwater Canyon and Whittsett Boulevards in Studio City. The SCRA helped make preparation of the grant proposal possible, and both the SCRA and Save LA River Open Space will work with CCS in both the planning and planting of the new habitat. Community planting days will be held, with planning and design to start this fall.

## **LIONS, TIGERS, BEARS & SIGNS**

Don Siligman of the Los Feliz Improvement Association addressed a recent meeting of the Hillside Federation and discussed plans for a master plan for Griffith Park. In 2005, City Councilmember Tom LaBonge asked the City Council to appoint a working group to develop the plan, which would address a lack of oversight that could lead to the destruction of the wild life corridor, traffic congestion and the gradual encroachment of commercial enterprises.

The Los Angeles Zoo has asked to be grandfathered in for commercial signs and for the building of a parking structure, hotel, restaurant and, possibly, an aerial tramway. Siligman asked community members to write letters to their respective councilmembers and the Department of Parks and Recreation if they were not in favor of these requests, and encouraged the community to request a master plan for Griffith Park be submitted for approval within ten months.

## **ASK THE SCRA**

**Q:** Are "Ask the SCRA" questions real, or do you make them up?

**SCRA:** If we made them up, our job would be so much easier! Without input from our members, SCRA volunteers who work on committees would find it very difficult to identify and act on the needs of the community. The SCRA helps educate and empower its members so community issues can be addressed in a timely manner. The more our members know about dealing with quality of life issues, the better our community looks and functions.

**Q:** I am a long-time member of the association. There is a drug store being built on the southwest corner of Ventura Blvd. and Vineland Ave. I live a block away. As they rebuild the sidewalk at Vineland and Fruitland, I noticed there is no provision for a handicap ramp at this corner. I spoke to the inspector and the superintendent, who referred me to the plan checker, Ali Nahas, at 818-374-4600. He said the planning department considered widening the street, but when that was dropped, so was the handicap ramp. He said it is up to the planning department to require the ramp.

**SCRA:** The SCRA called the drug store, Walgreen's, and were told the City did not require Walgreen's to install a handicap ramp. We made a second call to the City Council District 2 office. The Studio City Neighborhood Council had imposed several conditions on the permit that was issued to Walgreen's, including the need to replace trees on Vineland Ave. and install a bench and bicycle stand on the corner of Vineland Ave. and Ventura Blvd. The council office is monitoring the construction to make sure Walgreen's complies with the conditions and is working on adding the handicap ramp to the construction work, if possible.

**Q:** Thank you so much for the update on Coldwater Canyon Blvd. Do you have any word on when Halkirk will be open?

**SCRA:** Todd P. Le, P.E is the construction manager for the DWP charged with keeping the community informed. You can reach Todd Le at [todd.le@water.ladwp.com](mailto:todd.le@water.ladwp.com). He should be able to let you know when Halkirk will be opened.

**Q:** I have been a 25-year resident of Studio City, and have been pleased to see the many ways in which our city has improved over that time, thanks to the SCRA and the Beautification Association. One glaring exception is the CVS pharmacy on the corner of Laurel Canyon Blvd. and Ventura

**(Continued, Page 3)**

Blvd. This site has been an eyesore for a quarter of a century now! How can CVS be allowed to preside over such an egregious dump on the most prominent corner of our fair city? Are there no civic requirements whatsoever for a business that has so much impact on our community? What can be done to rectify this blight on our otherwise beautiful urban landscape?

**SCRA:** Several members have written in about this eyesore. The SCRA does not have any definitive answers at this time. Members should contact Lisa Sarkin of the Studio City Neighborhood Council's Land Use Committee to see if action can be taken to address this problem at board@studiocitync.org.

**Q:** The 33 percent floor area ratio in the mansionization ordinance limits the sale of my property.

**SCRA:** You are not limited to 33 percent. Those who remodel or rebuild can go as high as 53 percent. The ordinance specifies certain building requirements that must be met in order to increase the floor area ratio and protect neighbors from being overlooked. The entire ordinance can be viewed on the SCRA website at StudioCityResidents.org, under Advocacy-Planning & Land Use- Ordinances.

**Q:** Is there any update on the timeframe for the SCBA's landscape project at the Fryman Place-Oakdell Road triangle? Does the DWP own that land? The responsible party needs to clean out the spring weed growth.

**SCRA:** The property is owned by the City of Los Angeles. The Studio City Beautification Association just received permits through the Adopt-A-Median program and work has already begun. (See article in this newsletter.)

## HELP CONTRIBUTE TO LA'S TRANSPORTATION VISION: LA/2B

The City of Los Angeles Department of City Planning is working on a new vision of Los Angeles and the shape of transportation in the form of a new mobility plan called LA/2B. This plan involves shaping the City around its transit stations and includes bicycle, auto and pedestrian transportation. The City is changing a plan that has been in place since the 1990s.

Ken Bernstein, manager, Office of Historic Resources, and principal city planner, policy planning, recently talked to a group of interested neighborhood representatives about the new partnership between the City Planning Department and the MTA, supported by a grant to complete and adopt 10 TOD (transit-oriented development) station area plans within the next two years. None of the chosen stations are in Studio City, but they may serve as a model for future installations.

The new mobility plan will take a few years to complete. Beyond transportation, it also involves identifying and preserving historic resources. This process will continue through the spring of 2014, when there will be more public

## TO THE MARKET



The Studio City Farmers Market has a number of new vendors, including World Flavorz Spice and Tea Company, Hepps Salt Barrel, Secret Squirrel Cold Brewed Coffee, Olive Wood Pizza, and two

new organic farmers, Berumen Farms and Forbidden Fruit Orchards. Starting at the Laurel Canyon Blvd. end of the market, stop by Secret Squirrel to pick up a container of cold brewed coffee to take home and an iced coffee to sip while doing the rest of the shopping. Next, visit World Flavorz and pick up some salad herb mix, whitefish spice blend and orchid vanilla tea to help spice up lunches and dinners. Then cross the street to Berumen Farms to find organic berries, carrots, lettuce and kohlrabi.

Cross back over and head to Hepps Salt Barrel for some white or black truffle salt to use on scrambled eggs. Getting hungry? Keep walking toward Radford Avenue for Olive Wood Fired Pizza's wood burning oven and their off-the-charts single-serving pizzas. Then, finish the market with a visit to Forbidden Fruit Orchards for their organic blueberries and blueberry products.

Co-managed by the SCRA and the Studio City Chamber Foundation, the Market is open from 8:00 a.m. - 2:00 p.m. Free parking is available in the CBS lot on Radford Avenue.

workshops and hearings before adoption by the City Council. Interested parties can get involved in the process by joining a virtual town hall at LA2b.org., which provides an opportunity to contribute new ideas as well as identify streetscape elements and characteristics (curb extensions, crosswalks, landscaped medians, parkways, sidewalk widths, etc.) that are appropriate for each area.

## FROM THE SCRA BOARD

### Studio City Farmers Market

The Studio City Farmers Market is now open every Sunday from 8:00 a.m.-2:00 p.m.

### Rio Vista Elementary School Reading Garden

The Rotary Club and Universal Studios are funding an upgrade and re-planting of the reading garden, originally established by the Rotary Club, at Rio Vista Elementary School. The SCBA's Francesca Corra of Dirt Diva Designs has donated her services to design a sustainable site.

### SCRA's Winter Family Festival

Board member Bonnie Goodman reported Radio Disney will partner with the SCRA to bring the community the second annual "Winter Family Festival" scheduled for December 2, 2012 at Beeman Park.

(Continued, Page 4)

## (Board, cont'd)

### Farewell to Fran Quigley

Longtime Studio City resident Fran Quigley passed away in April. Quigley was a member of the Studio City Chamber of Commerce, board member and office manager of the SCRA, founder of the Civic Committee and the perfect advocate for Studio City. Quigley's grace and stamina will be greatly missed. Councilmember Paul Kerkorian honored Quigley at a recent City Council meeting. The Fran Quigley Award for 'Exceptional Service' will live on through the SCRA's annual Studio City Cares and Fran Quigley Awards.

### Redistricting

City Council redistricting maps are still being finalized and must be implemented by June 30, 2012. Councilmember Paul Kerkorian will continue to be Studio City's council person. Thanks to the work of SCRA Board Member Barry Johnson, City Council District 2 will have connecting borders with Studio City, Valley Village and North Hollywood.

## SAVE LA RIVER OPEN SPACE WELCOMES PRESIDENT OBAMA TO STUDIO CITY



Save LA River Open Space never misses an opportunity in its attempts to raise money to purchase the property at the Weddington Golf and Tennis. Board member Laurie Cohn stood on Laurel Canyon Blvd. during President Obama's fundraiser visit to George Clooney's house to help raise visibility for the organization. Cohn says any effort to achieve the dream of a Los Angeles River Natural Park here in Studio City is well worth it.

## MOVING SLOWLY TOWARD SOLUTIONS FOR BROKEN SIDEWALKS

Though at a slow pace, the City is moving toward a solution to fixing broken sidewalks around the neighborhood. Earlier this year, the City Council's Public Works Committee moved to keep the city code requiring the City to repair sidewalks damaged from tree roots. A proposal was being considered to make adjoining property owners responsible for sidewalk repairs where tree roots are the cause.

Along with this, the committee asked the Bureau of Street Services to look into the feasibility of a study to discover the extent of damage in order to determine the cost for repairs, which the SCRA had suggested at an earlier meeting. The Bureau will report back to the committee regarding this undertaking at the end of summer.

At the same time, a motion was filed in court by a group

representing people with disabilities to allow a class action against the City, because it has not followed through with its responsibility to repair



sidewalks as required in the Americans with Disabilities Act. The SCRA has spoken with the plaintiff's lead attorney, who said that this action, which will be heard in the fall, was the last resort available to get the City to act for the more than 200,000 disabled people and seniors in Los Angeles who cannot use the sidewalks because of the danger they impose.

The SCRA will continue to work with the City to find a solution to the problem of broken sidewalks. Studio City Councilmember Paul Kerkorian sent a letter to his constituency more than a year ago, saying he believes the city should fix broken sidewalks, and the cost not be burdened by property owners.

## SIGN UP NOW AND DON'T BE LEFT OUT: SCRA ANNUAL MEMBERSHIP DRIVE

In his inaugural address, John F. Kennedy said: "Ask not what your country can do for you; ask what you can do for your country". This principle still resonates with those who give time and engage in volunteer activities. And now the SCRA is asking its members to do something for the SCRA.

The SCRA is a strong and viable advocate for Studio City with an aggressive and hardworking board of directors and committees, but the organization needs your help. Be sure to renew your membership, which expires in June. And, please talk to one or more neighbors and encourage them to join as well by visiting the SCRA website at [studiocityresidents.org](http://studiocityresidents.org).

- As co-owner of the Studio City Farmers Market with the Studio City Chamber Foundation, the SCRA board has strengthened and secured this major community asset. All proceeds from the market are used to improve Studio City by supporting Studio City Beautification Association projects and the Chamber of Commerce-produced July 4 event at CBS, making donations to local schools, and, recently, producing the SCRA's "Winter Family Festival," which helps raise funds for Studio City Recreation Center.
- With the recent enactment of the mansionization ordinance, the SCRA has helped protect all residents living in the flat areas of Studio City against developers who want to maximize profit at the expense of the community. This ordinance also recognizes the property rights of families who want to expand their homes. The SCRA monitors proposed changes to ordinances in the City of Los Angeles, attends hearing and speaks on the community's behalf on issues that have a direct effect on our quality of life.

SCRA is a RESIDENTS association; it represents homeowners, condo-owners and renters.

## CALLING ALL SCRA SENIORS

Is there a senior out there, a present or past SCRA member, who was a SCRA member up to and including the late '70s? The SCRA would like to hear from you. We are considering an informal get-together of SCRA members. If you are interested, please call the SCRA office at (818) 509-0230 or e mail SCRABoard@studiocityresidents.org with your name and contact information.

## TOO MUCH FRUIT

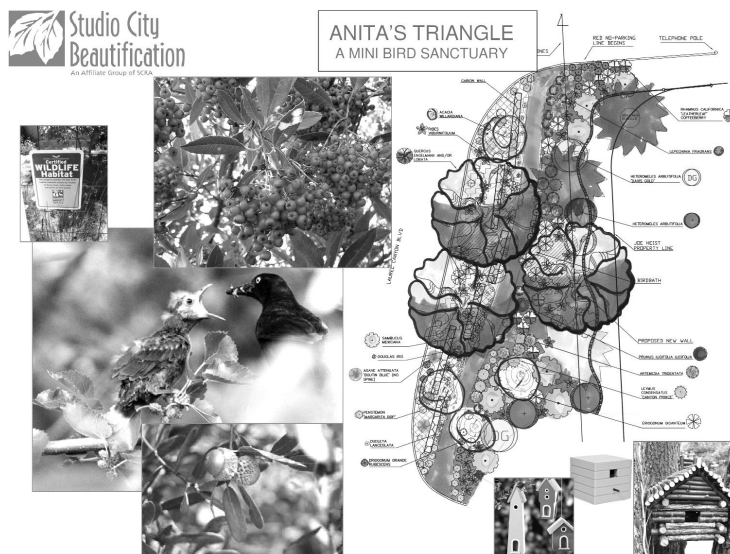
Oranges, grapefruit and other garden produce on your property can be overwhelming at times, and often much of the crop ends up not being used. The SCRA recently found a non-profit organization, The Foodforward, which welcomes the chance to pick and distribute this excess fruit and produce. Founder and Executive Director Rick Nahmias explains they are looking for fruit later in the years since they currently have a full schedule. Lemons are not in great demand as "one lemon goes a long way;" therefore, lemon trees usually are not on the schedule unless the tree is part of a larger group, e.g., oranges. For more information visit Foodforward.org and click on "property owners." Under the paragraph "How it works," locate the link for "registration forms" highlighted in blue, which will take you to an application form.

Also worth investigating is the "Private Pick Program" on the website. Picks are organized by Foodforward for groups, such as businesses, scouting organizations, religious organizations, etc., which organize social events. Contact Rick at 818-530-412 or Rick@Foodforward.org.

## BEAUTIFUL STUDIO CITY

**Anita's Triangle:** Located at the junction of Laurel Canyon Blvd. and Fryman Place, Anita's Triangle is a small triangle of public land created years ago when Oakdell and Fryman Place were realigned. New landscaping by the SCBA will replace what is presently a weed-covered eyesore with two oak trees, native plants and a bird habitat. To review the details of the project, log onto studiocityresident.org. Click on the right panel for SCBA and watch the PowerPoint presentation.

Any donations to help fund the project are most welcome. Please make checks payable to Studio City Beautification Association, P.O. Box 1374, Studio City, CA 91614. Indicate on the check that the donation is for "Anita's Triangle." All donations to this project are tax deductible.



## PRESIDENT'S MESSAGE by Alan Dymond

*Everything today is "green." Being green is good for our well being and all living creatures on this planet of ours, but, without water, then what?*

*Laurie Cohn, a fellow board member of Save LA River Open Space (SLAROS), and I recently attended a conference on water reclamation held at the Tree People Conference Center. The conference was sponsored by a select committee of the California Assembly chaired by Assemblymember Jose Salario. LA County Supervisor Zev Yaroslavsky along with Assemblymembers Bob Blumenthal, Betsy Butler and Holly Mitchell comprised the panel. Other water agencies joined in the discussion. The SCRA and SLAROS chimed in during the public comment period.*

*Back to "green" and the two colors that make up green, blue and yellow. "Yellow" is sunshine, the primary source of energy on this planet, while blue is the color of water. We have the sun, but do we have the water? The answer I came away with from the conference is "Yes," provided we take important steps now. A large amount of rain falls on the Los Angeles area, but more than 60 to 70 percent goes to the ocean. The discussion at the conference centered on how to capture, clean, store and supply this water to Los Angeles. If a number of modes to recycle water were implemented, then we would truly have an abundant water supply.*

*Supervisor Yaroslavsky will be seeking agreement from his fellow supervisors to put a water measure on an upcoming ballot. Meanwhile, statewide, efforts are also being considered to form an overall water policy to meet present and future water requirements. The project that SLAROS is working on to create a Los Angeles River Natural Park on Whittsett Avenue at the Weddington Golf & Tennis site fits right in with the philosophy to capture rain water and other runoff to clean, store and use it. The SCRA and SLAROS will be keeping a close watch on proposals as they develop and provide updates to SCRA members.*

*On another matter, please read the article on sidewalk repairs. There is an assembly bill being proposed that will make damage from tree roots a city responsibility. Presently, the City is liable for these repairs; as a result, the SCRA is not taking a position on this issue at this time.*

*Alan Dymond*



**NO MEETING  
IN JUNE**

**Next Meeting:**

**Tuesday, July 10, 2012**

**JULY MEETING AGENDA**

**7:00 p.m. Refreshments**

**7:30 p.m. Southern California's  
Clean Energy Future:**

**How We Can Play a Role  
Rochelle Silsbee, Public  
Affairs Manager, Southern  
California Gas Company**

**Meeting Location**

**Beverly Garland's Holiday Inn Theatre  
4222 Vineland Avenue, Studio City**

*When entering the hotel driveway, turn left and go through the parking turnstile. Drive to the end and turn right. Go to the large back lot. The handicap entrance is from this lot. Walk to the southwest corner of the lot, and signs will direct you to the Beverly Garland Theatre. **PARKING WILL BE VALIDATED** at the sign-in-table.*

*The SCRA thanks Beverly Garland's Holiday Inn for continued support of the monthly SCRA Community Meetings*

**SCRA Committees**

Burbank Airport, Chair: Chris Barnes  
Crime and Safety  
Los Angeles River Committee  
Membership  
Planning and Land Use

**Officers**

Alan Dymond, President  
Bonnie Goodman, Exec.Vice President  
Claudia Freedle, Admin. Vice President  
Connie Elliot, Secretary  
Bryan Abrams, Treasurer

**Board Members**

Beth Dymond  
Martha Hanrahan  
Steve Hirsh

Art Howard  
Barry Johnson  
Robin Seidel  
Barry Weiss

**Immediate Past President**

Art Howard

**Beautification Association**

Beth Dymond, President  
Francesca Corra, Vice President  
Connie Elliot, Secretary  
Bryan Abrams, Treasurer

**Park Advisory Board Liaison**

Mark Batterman

**Director of Animal Welfare**

Robin Seidel

**Save L.A. River Studio City Open Space**

Co-Directors  
Laurie Cohn, Alan Dymond, Steve Hirsh,  
Art Howard, Patty Kirby  
saveopenspace@SLAROS.org

**School Liaisons**

Carpenter - Bonnie Goodman  
Oakwood - Tammy Lundgren  
Walter Reed - Bonnie Kalaf

**Studio City Farmers Market**

Manager: Melody Dosch (818) 655-7744  
studiocityfarmersmarket@yahoo.com

**Newsletter**

Editor: Bonnie Goodman  
Graphic Design: Kevin Lewis  
(818) 667-6647 kevin@kevw.com